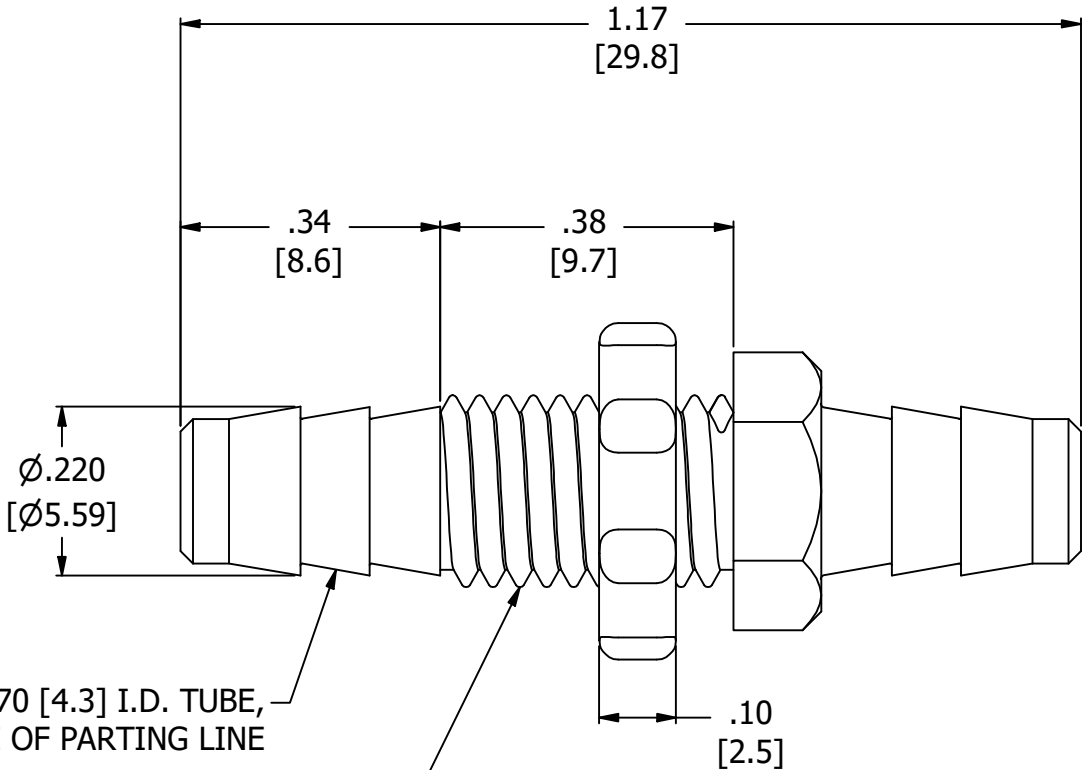
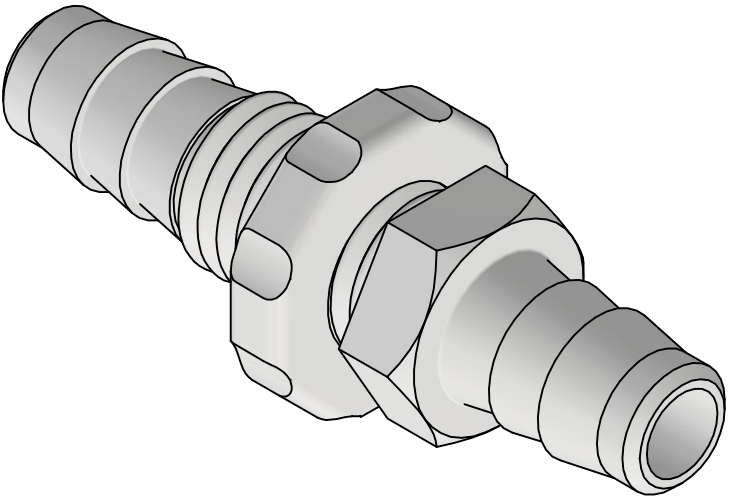
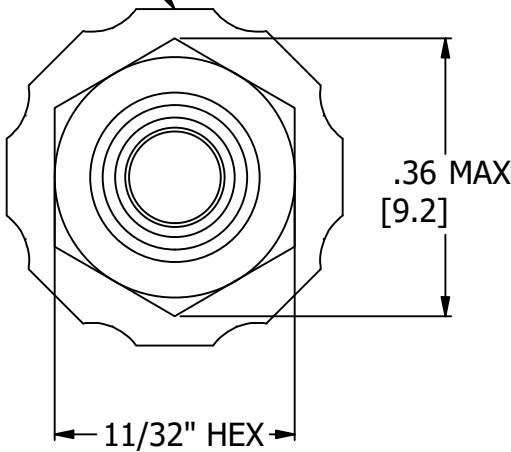


- NOTES:
1. ALL DIMENSIONS FOR REFERENCE ONLY
  2. TUBE RETENTION PRESSURE SUBJECT TO TUBING DIMENSION AND STIFFNESS
  3. PANEL NUT UNASSEMBLED AS DELIVERED




SUPPLIED PANEL NUT,  
FINGER TIGHT ONLY,  
NOTE 3



BARBED CONNECTIONS FOR Ø.170 [4.3] I.D. TUBE,  
FIRST BARB FREE OF PARTING LINE

1/4-28 UNF - 2A

PRODUCT SPECIFICATIONS	
COLOR	NATURAL
MEDIA	GASES, LIQUIDS
MAX INLET PRESSURE	125 PSI, [8.6 BAR]
TYPICAL TUBE RETENTION PRESSURE	125 PSI, [8.6 BAR], NOTE 2
PANEL CLEARANCE HOLE	9/32"
MINIMUM INNER DIAMETER	Ø.12 [Ø3.048]
WETTED MATERIALS	PVDF

 <b>AIR-LOGIC</b> ® DIVISION OF KNAPP MFG, INC. 5102 DOUGLAS AVE RACINE, WI 53402 PHONE: (262) 639-9035 FAX: (262) 639-5996 WEB: AIR-LOGIC.COM	
PART/DRAWING NO.: <b>F310086PVDF</b>	
DESCRIPTION: PVDF BULKHEAD, 1/4-28 UNF, .170 X .170" BARBS	
REVISION: A	DRAWN: 9/10/2025
SCALE: 4 : 1	SHEET SIZE: B

TERMS OF USE:  
THIS DRAWING IS FOR INFORMATIONAL PURPOSES ONLY. AIR LOGIC MAKES NO REPRESENTATIONS OF WARRANTIES CONCERNING SUITABILITY FOR ANY PARTICULAR PURPOSE. ALL PRODUCTS SUPPLIED ARE SUBJECT TO TERMS AND CONDITIONS FOUND AT AIR-LOGIC.COM

DRAWING TAKES PRECEDENCE OVER 3D MODEL GEOMETRY

TOLERANCE: DECIMALS .00 ± .01, .000 ± .005, FRACTIONS ± 1/64  
ANGLES 1/4° UNLESS OTHERWISE SPECIFIED  
UNITS: INCHES [MILLIMETERS]